

**100-10-0148**  
**LMX200™ Enhanced System**



\* GPS is optional



**100-60-0058 LMX® Series ATA**  
**Shipping Case (with DVL Bag)**



**100-60-0066 Deluxe**  
**Display Unit Carrying Case**



**100-55-0023 Spare Battery**

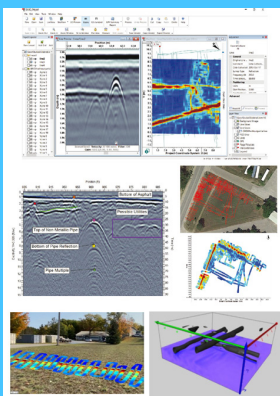


**100-55-0027**  
**Spare Battery Charger**



**100-54-0150 AG-200**  
**GPS Kit for LMX200™**

**EKKO\_Project™ GPR Analysis Software**



- 100-11-0121 Core Bundle**
- 100-11-0122 Examine Bundle**
- 100-11-0123 Reveal Bundle**
- 100-11-0124 Suite Bundle**
- 100-11-0125 3D Reveal Bundle**
- 100-11-0126 3D Suite Bundle**

**Display Unit Tray Knob Cap and Screws (2)**



**Display Unit Cable**  
**Jack Screws (2)**  
**and Shims (2)**



**Sensors Support Straps (4)**



**Safety Locking Pin (1)**



**Hex Standoffs (4)**



**100-54-0154 LMX® Spare Parts Kit**

Copyright © 2023 Radiodetection Ltd. All Rights Reserved. Sensors & Software is a registered trademark of Radiodetection in the United States and/or other countries. Trademarks and Notices. The following are trademarks of Radiodetection: LMX, LMX200 and EKKO\_Project. Due to a policy of continued development, we reserve the right to alter or amend any published specification without notice. This document may not be copied, reproduced, transmitted, modified or used, in whole or in part, without the prior written consent of Radiodetection Ltd.